

2 - BEDROOM

TYPE B1-G

49 sq m/ 527 sq ft

INCLUSIVE OF 4 SQM PES

TOWER 52

UNIT

#01-03

#01-07

TOWER 56

UNIT

#01-13*

TOWER 58

UNIT

#01-21

TOWER 62

UNIT

#01-33

#01-37

TOWER 64

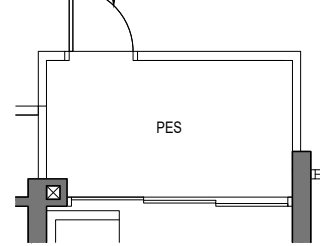
UNIT

#01-41

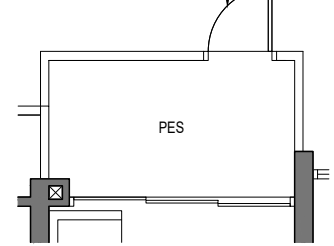
#01-44*

#01-45

#01-07
#01-41
#01-44*
#01-45



#01-03
#01-13*
#01-21
#01-33
#01-37



APPLICABLE TO TYPE B1-G

TYPE B1

49 sq m/ 527 sq ft

INCLUSIVE OF 4 SQM BALCONY

TOWER 52

UNIT

#02-03 TO #08-03

#02-07 TO #08-07

TOWER 56

UNIT

#02-13* TO #08-13*

TOWER 58

UNIT

#02-21 TO #08-21

TOWER 62

UNIT

#02-33 TO #08-33

#10-33 TO #16-33

#02-37 TO #08-37

#10-37 TO #16-37

TOWER 64

UNIT

#02-41 TO #08-41

#10-41 TO #16-41

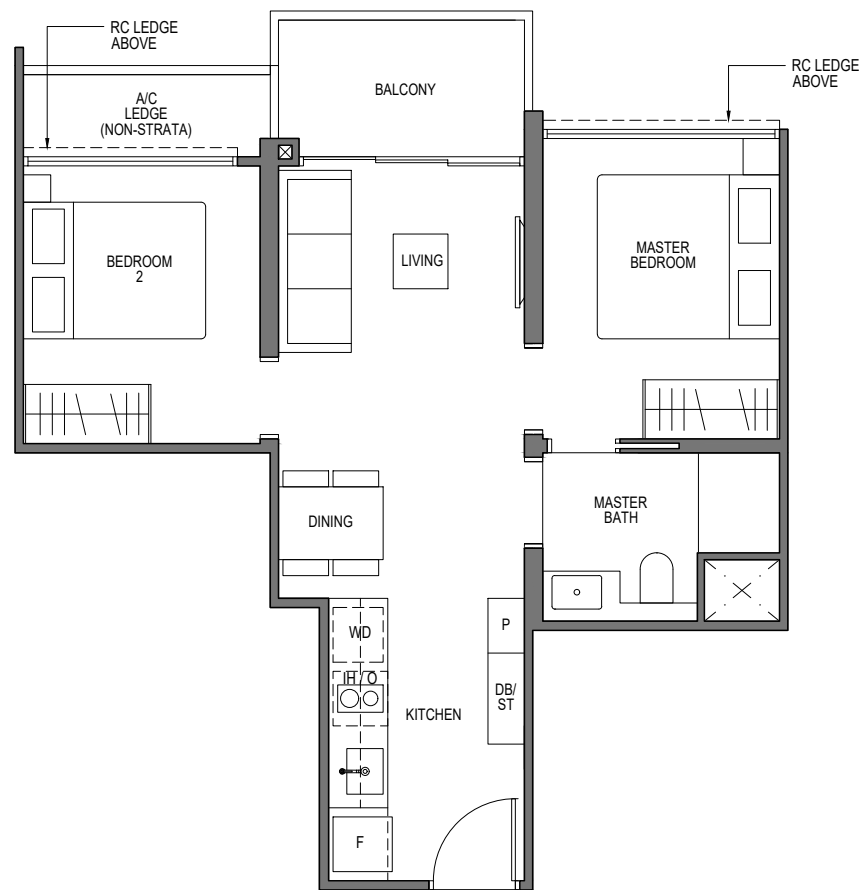
#02-44* TO #08-44*

#10-44* TO #16-44*

#02-45 TO #08-45

#10-45 TO #16-45

* MIRROR IMAGE



LEGEND (where applicable) :

F - Fridge

P - Pantry

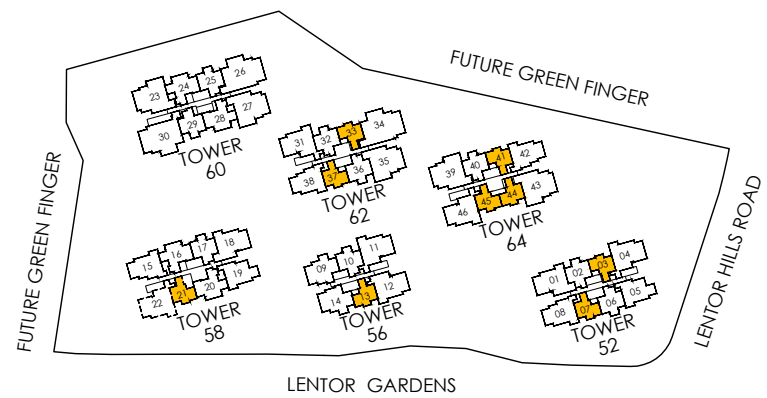
O - Oven

IH - Induction Hob

WD - Washer Dryer

DB - Distribution Board

ST - Store



2 - BEDROOM

TYPE B2-G

61 sq m/ 657 sq ft

INCLUSIVE OF 5 SQM PES

TOWER 52

UNIT

#01-02*

#01-06*

TOWER 56

UNIT

#01-10

TOWER 58

UNIT

#01-17

TOWER 60

UNIT

#01-25

#01-29

TOWER 62

UNIT

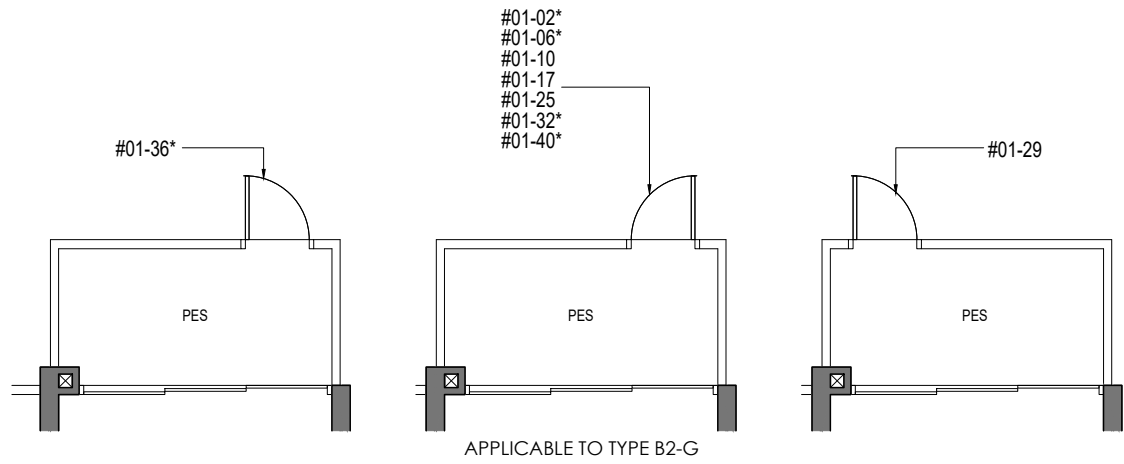
#01-32*

#01-36*

TOWER 64

UNIT

#01-40*



TYPE B2

61 sq m/ 657 sq ft

INCLUSIVE OF 5 SQM BALCONY

TOWER 52

UNIT

#02-02* TO #08-02*

#02-06* TO #08-06*

TOWER 56

UNIT

#02-10 TO #08-10

TOWER 58

UNIT

#02-17 TO #08-17

TOWER 60

UNIT

#02-25 TO #08-25

#10-25 TO #16-25

#02-29 TO #08-29

#10-29 TO #16-29

TOWER 62

UNIT

#02-32* TO #08-32*

#10-32* TO #16-32*

#02-36* TO #08-36*

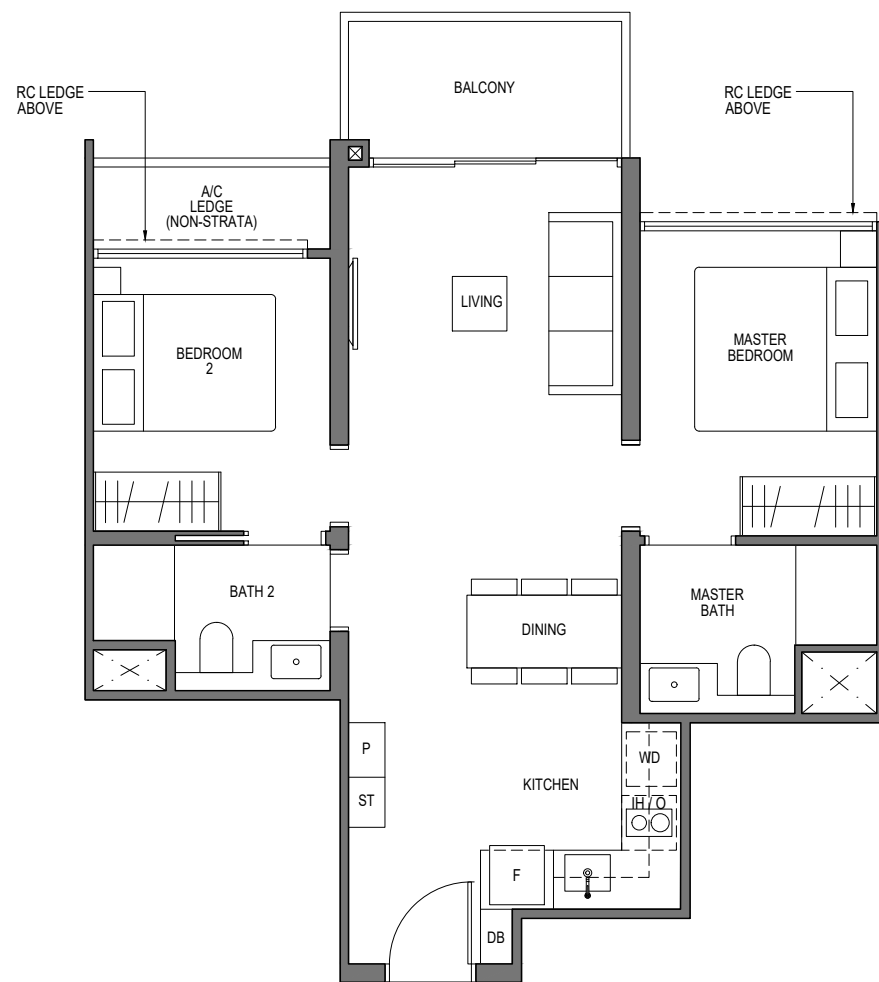
#10-36* TO #16-36*

TOWER 64

UNIT

#02-40* TO #08-40*

#10-40* TO #16-40*



* MIRROR IMAGE



LEGEND (where applicable) :

F - Fridge

WD - Washer Dryer

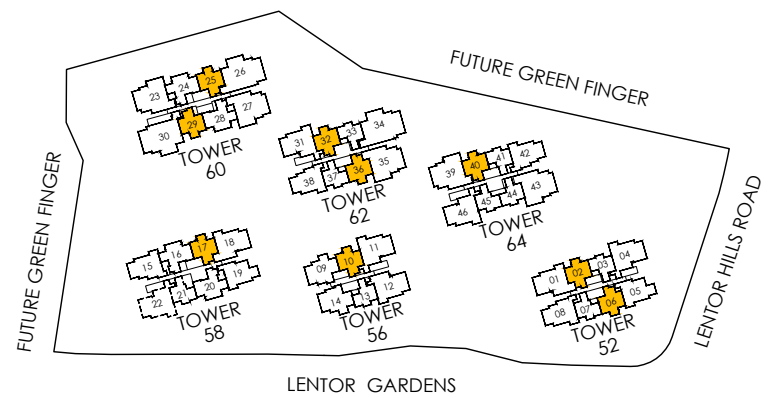
P - Pantry

DB - Distribution Board

O - Oven

ST - Store

IH - Induction Hob



All plans are subjected to amendments as may be approved by the relevant authorities. Floor areas are approximate measurements and are subjected to final survey.
BP Approval No. A1709-00005-2023-BP01 dated 31/01/2024

3 - BEDROOM

TYPE C1-G

73 sq m/ 786 sq ft

INCLUSIVE OF 5 SQM PES

TOWER 58

UNIT

#01-16

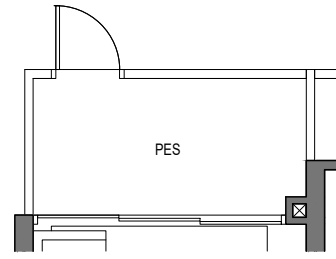
#01-20

TOWER 60

UNIT

#01-24

#01-28



APPLICABLE TO TYPE C1-G

TYPE C1

73 sq m/ 786 sq ft

INCLUSIVE OF 5 SQM BALCONY

TOWER 58

UNIT

#02-16 TO #08-16

#02-20 TO #08-20

TOWER 60

UNIT

#02-24 TO #08-24

#10-24 TO #16-24

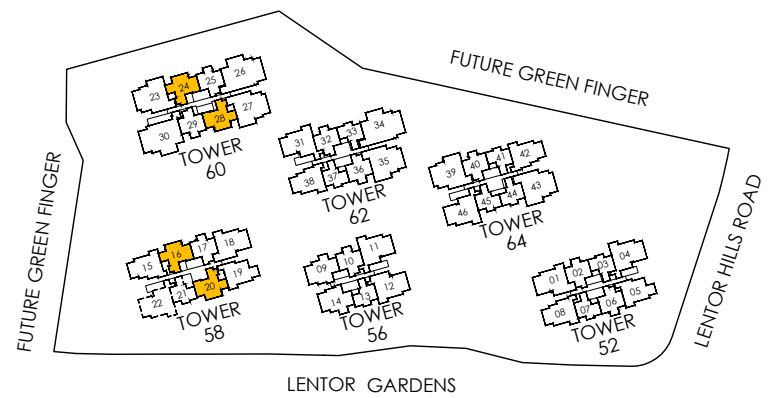
#02-28 TO #08-28

#10-28 TO #16-28



LEGEND (where applicable) :

- F - Fridge
- WD - Washer Dryer
- P - Pantry
- DB - Distribution Board
- O - Oven
- ST - Store
- IH - Induction Hob



All plans are subjected to amendments as may be approved by the relevant authorities. Floor areas are approximate measurements and are subjected to final survey.
BP Approval No. A1709-00005-2023-BP01 dated 31/01/2024

3 - BEDROOM

TYPE C2-G

76 sq m/ 818 sq ft

INCLUSIVE OF 5 SQM PES

TOWER 52

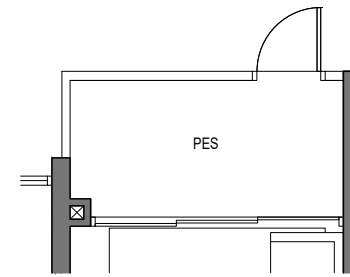
UNIT

#01-05

TOWER 58

UNIT

#01-19



APPLICABLE TO TYPE C2-G

TYPE C2

76 sq m/ 818 sq ft

INCLUSIVE OF 5 SQM BALCONY

TOWER 52

UNIT

#02-05 TO #08-05

TOWER 58

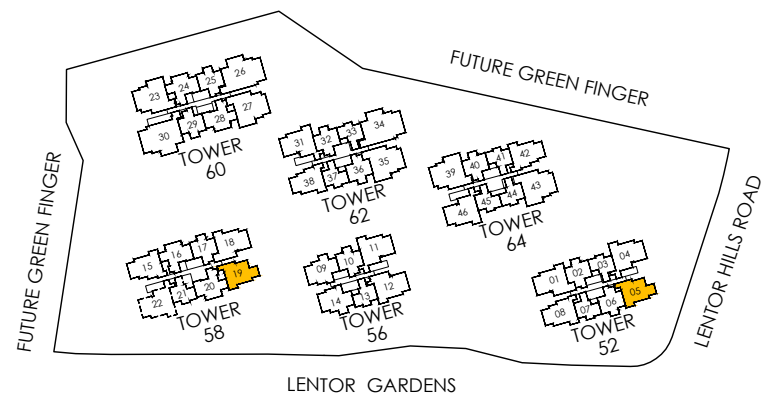
UNIT

#02-19 TO #08-19



LEGEND (where applicable) :

- F - Fridge
- WD - Washer Dryer
- P - Pantry
- DB - Distribution Board
- O - Oven
- ST - Store
- IH - Induction Hob



All plans are subjected to amendments as may be approved by the relevant authorities. Floor areas are approximate measurements and are subjected to final survey.
BP Approval No. A1709-00005-2023-BP01 dated 31/01/2024

3 - BEDROOM

TYPE C3-G

80 sq m/ 861 sq ft

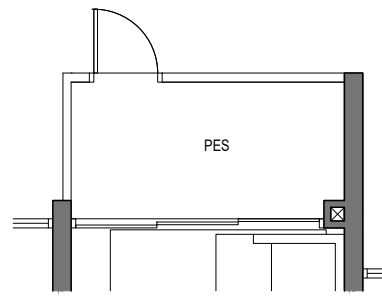
INCLUSIVE OF 5 SQM PES

TOWER 56

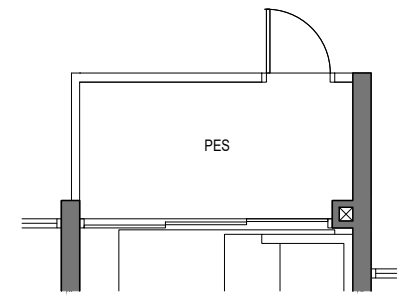
UNIT

#01-09

#01-14*



APPLICABLE TO TYPE C3-G UNIT 01-09



APPLICABLE TO TYPE C3-G UNIT 01-14*

TYPE C3

80 sq m/ 861 sq ft

INCLUSIVE OF 5 SQM BALCONY

TOWER 56

UNIT

#02-09 TO #08-09

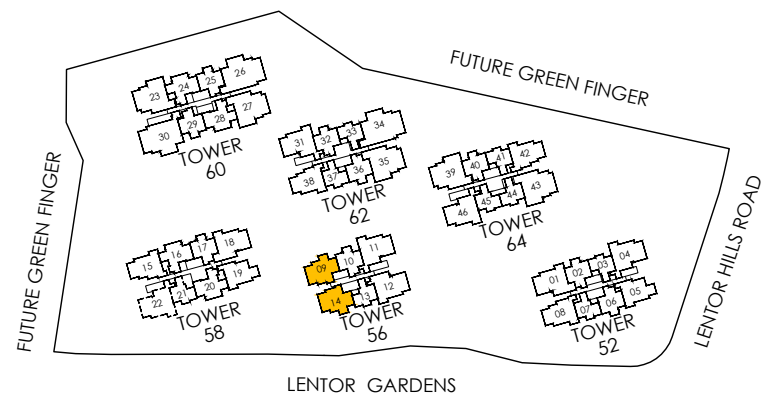
#02-14* TO #08-14*

* MIRROR IMAGE



LEGEND (where applicable) :

- F - Fridge
- WD - Washer Dryer
- P - Pantry
- DB - Distribution Board
- O - Oven
- ST - Store
- GH - Gas Hab



All plans are subjected to amendments as may be approved by the relevant authorities. Floor areas are approximate measurements and are subjected to final survey.
BP Approval No. A1709-00005-2023-BP01 dated 31/01/2024

3 - BEDROOM

TYPE C4-G

84 sq m/ 904 sq ft

INCLUSIVE OF 5 SQM PES

TOWER 58

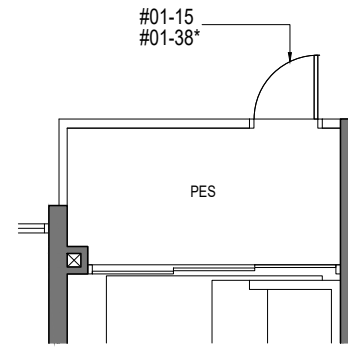
UNIT

#01-15

TOWER 62

UNIT

#01-38*



APPLICABLE TO TYPE C4-G

TYPE C4

84 sq m/ 904 sq ft

INCLUSIVE OF 5 SQM BALCONY

TOWER 58

UNIT

#02-15 TO #08-15

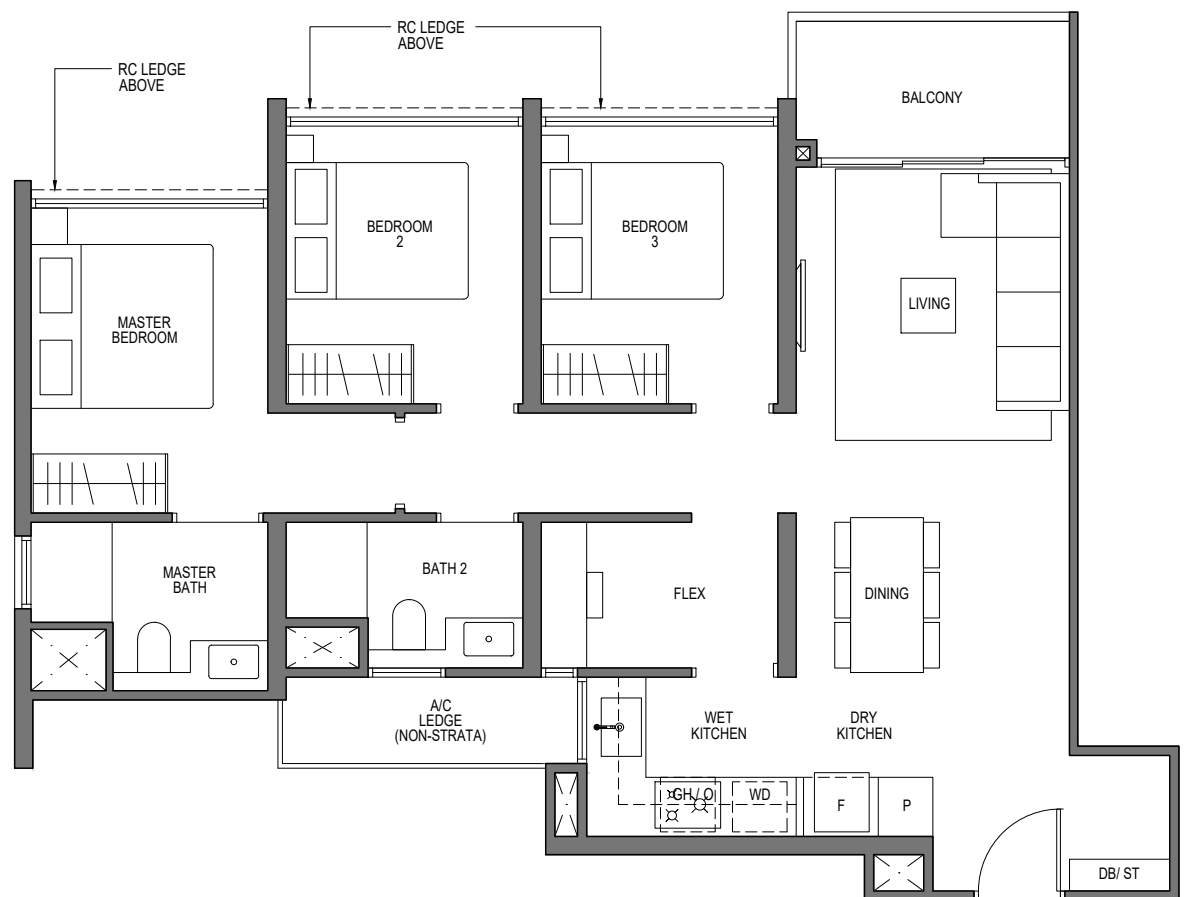
TOWER 62

UNIT

#02-38* TO #08-38*

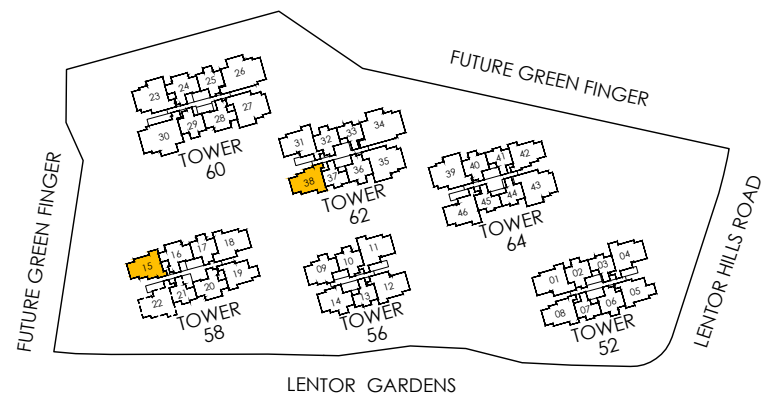
#10-38* TO #16-38*

* MIRROR IMAGE



LEGEND (where applicable) :

- F - Fridge
- WD - Washer Dryer
- P - Pantry
- DB - Distribution Board
- O - Oven
- ST - Store
- GH - Gas Hab



All plans are subjected to amendments as may be approved by the relevant authorities. Floor areas are approximate measurements and are subjected to final survey.
BP Approval No. A1709-00005-2023-BP01 dated 31/01/2024

3 - BEDROOM

TYPE C5-G

84 sq m/ 904 sq ft

INCLUSIVE OF 5 SQM PES

TOWER 52

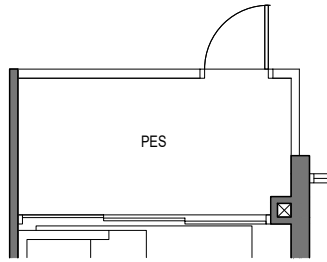
UNIT

#01-08

TOWER 64

UNIT

#01-42



APPLICABLE TO TYPE C5-G

TYPE C5

84 sq m/ 904 sq ft

INCLUSIVE OF 5 SQM BALCONY

TOWER 52

UNIT

#02-08 TO #08-08

TOWER 64

UNIT

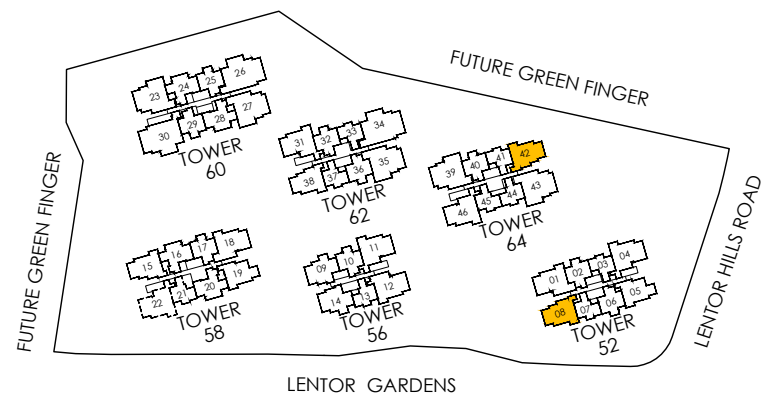
#02-42 TO #08-42

#10-42 TO #16-42



LEGEND (where applicable) :

- F - Fridge
- P - Pantry
- O - Oven
- GH - Gas Hob
- WD - Washer Dryer
- DB - Distribution Board
- ST - Store



All plans are subjected to amendments as may be approved by the relevant authorities. Floor areas are approximate measurements and are subjected to final survey.
BP Approval No. A1709-00005-2023-BP01 dated 31/01/2024

3 - BEDROOM

TYPE C6-G

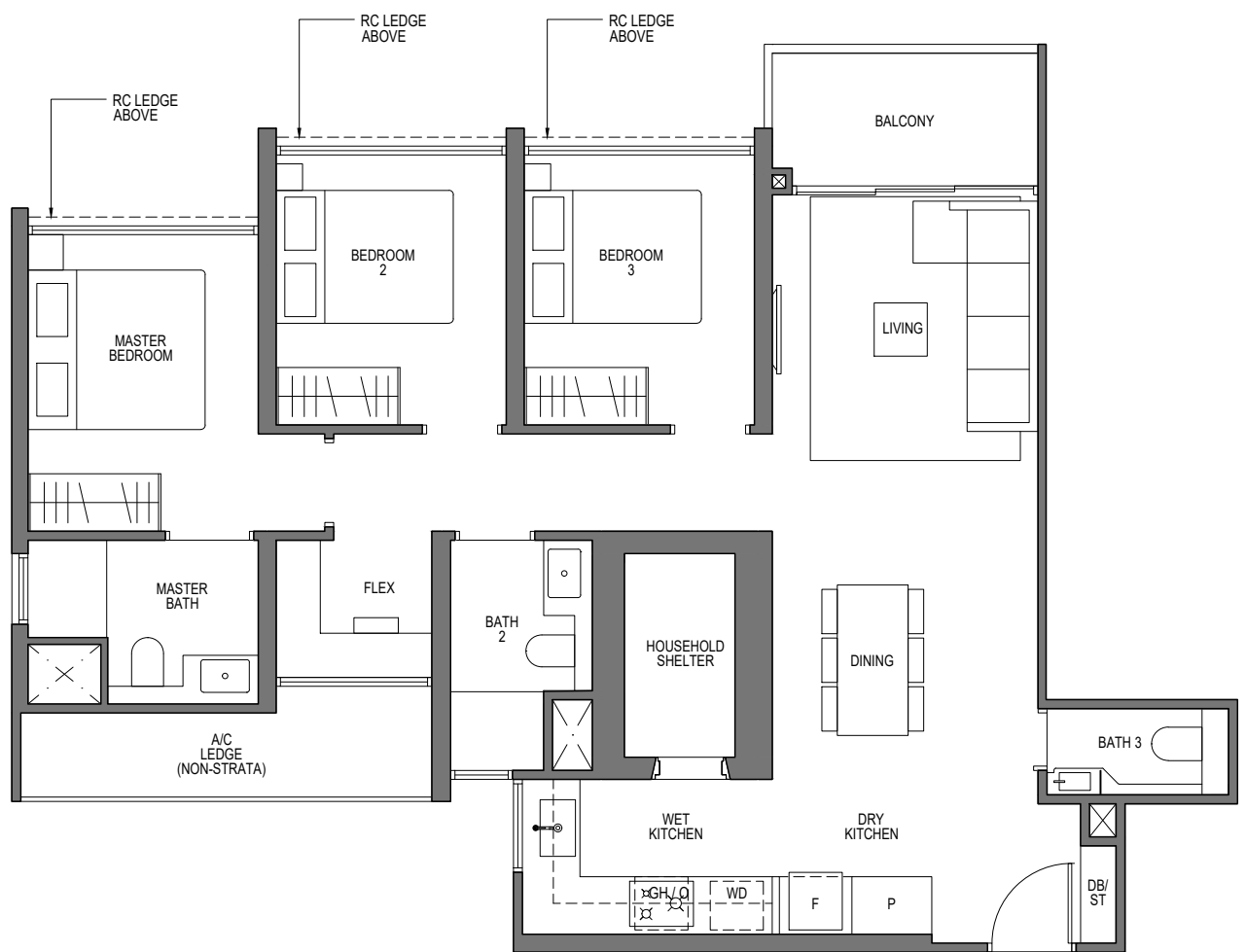
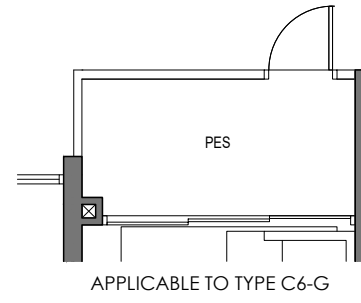
92 sq m/ 990 sq ft
 INCLUSIVE OF 5 SQM PES

TOWER 56
 UNIT
 #01-12

TYPE C6

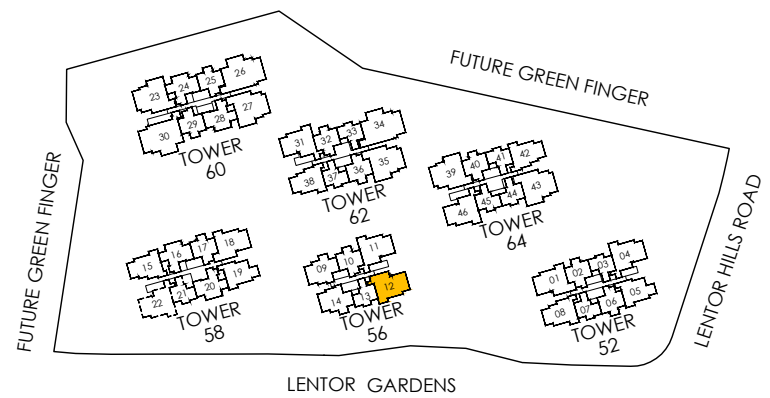
92 sq m/ 990 sq ft
 INCLUSIVE OF 5 SQM BALCONY

TOWER 56
 UNIT
 #02-12 TO #08-12



LEGEND (where applicable) :

- F - Fridge
- WD - Washer Dryer
- P - Pantry
- DB - Distribution Board
- O - Oven
- ST - Store
- GH - Gas Hab



All plans are subjected to amendments as may be approved by the relevant authorities. Floor areas are approximate measurements and are subjected to final survey.
 BP Approval No. A1709-00005-2023-BP01 dated 31/01/2024

3 - BEDROOM

TYPE C7-G

94 sq m/ 1012 sq ft

INCLUSIVE OF 5 SQM PES

TOWER 52

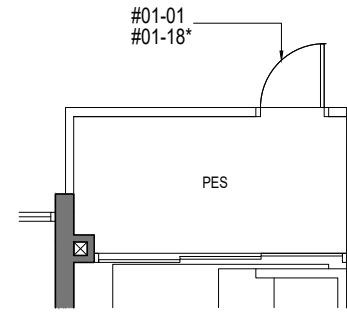
UNIT

#01-01

TOWER 58

UNIT

#01-18*



APPLICABLE TO TYPE C7-G

TYPE C7

94 sq m/ 1012 sq ft

INCLUSIVE OF 5 SQM BALCONY

TOWER 52

UNIT

#02-01 TO #08-01

TOWER 58

UNIT

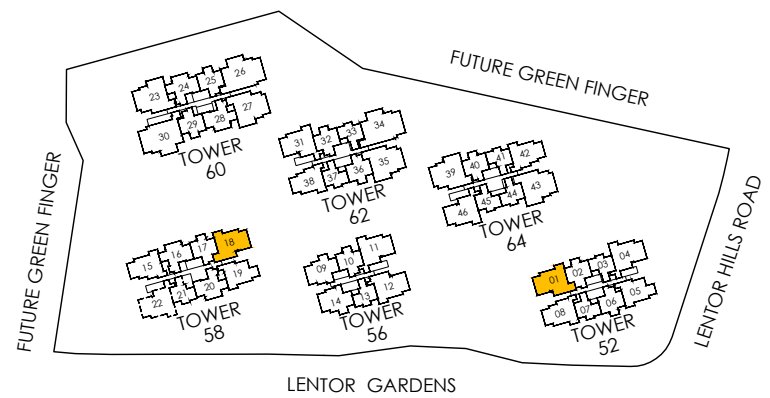
#02-18* TO #08-18*

* MIRROR IMAGE



LEGEND (where applicable) :

- F - Fridge
- WD - Washer Dryer
- P - Pantry
- DB - Distribution Board
- O - Oven
- ST - Store
- GH - Gas Hob



All plans are subjected to amendments as may be approved by the relevant authorities. Floor areas are approximate measurements and are subjected to final survey.
BP Approval No. A1709-00005-2023-BP01 dated 31/01/2024

3 - BEDROOM

TYPE C8-G

95 sq m/ 1023 sq ft

INCLUSIVE OF 5 SQM PES

TOWER 52

UNIT

#01-04

TOWER 56

UNIT

#01-11

TOWER 62

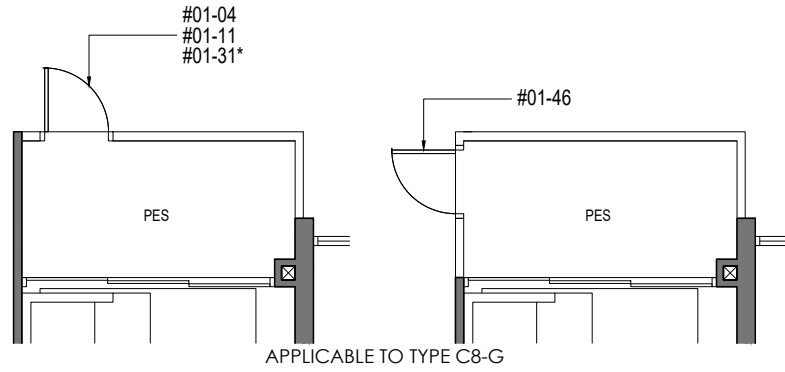
UNIT

#01-31*

TOWER 64

UNIT

#01-46



TYPE C8

95 sq m/ 1023 sq ft

INCLUSIVE OF 5 SQM BALCONY

TOWER 52

UNIT

#02-04 TO #08-04

TOWER 56

UNIT

#02-11 TO #08-11

TOWER 58

UNIT

#04-22 TO #08-22

TOWER 62

UNIT

#02-31* TO #08-31*

#10-31* TO #16-31*

TOWER 64

UNIT

#02-46 TO #08-46

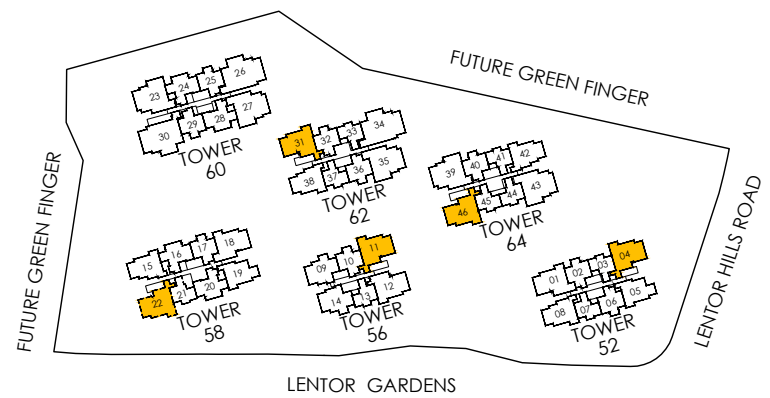
#10-46 TO #16-46

* MIRROR IMAGE



LEGEND (where applicable) :

- F - Fridge
- WD - Washer Dryer
- P - Pantry
- DB - Distribution Board
- O - Oven
- ST - Store
- GH - Gas Hob



All plans are subjected to amendments as may be approved by the relevant authorities. Floor areas are approximate measurements and are subjected to final survey.
BP Approval No. A1709-00005-2023-BP01 dated 31/01/2024

4 - BEDROOM

TYPE D1-G

114 sq m/ 1227 sq ft

INCLUSIVE OF 9 SQM PES

TOWER 60

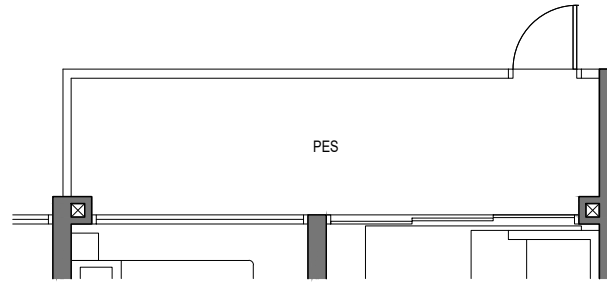
UNIT

#01-23

TOWER 64

UNIT

#01-39



APPLICABLE TO TYPE D1-G

TYPE D1

114 sq m/ 1227 sq ft

INCLUSIVE OF 9 SQM BALCONY

TOWER 60

UNIT

#02-23 TO #08-23

#10-23 TO #16-23

TOWER 64

UNIT

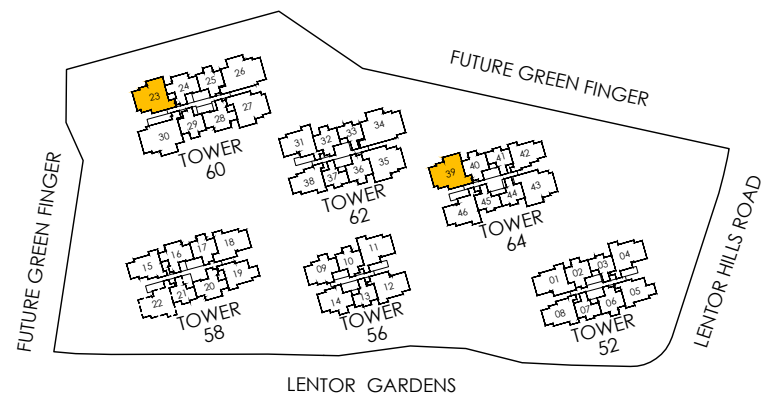
#02-39 TO #08-39

#10-39 TO #16-39



LEGEND (where applicable) :

- F - Fridge
- WD - Washer Dryer
- P - Pantry
- DB - Distribution Board
- O - Oven
- ST - Store
- GH - Gas Hob



All plans are subjected to amendments as may be approved by the relevant authorities. Floor areas are approximate measurements and are subjected to final survey.
BP Approval No. A1709-00005-2023-BP01 dated 31/01/2024

4 - BEDROOM

TYPE D2-G

114 sq m/ 1227 sq ft

INCLUSIVE OF 9 SQM PES

TOWER 60

UNIT

#01-27

TOWER 62

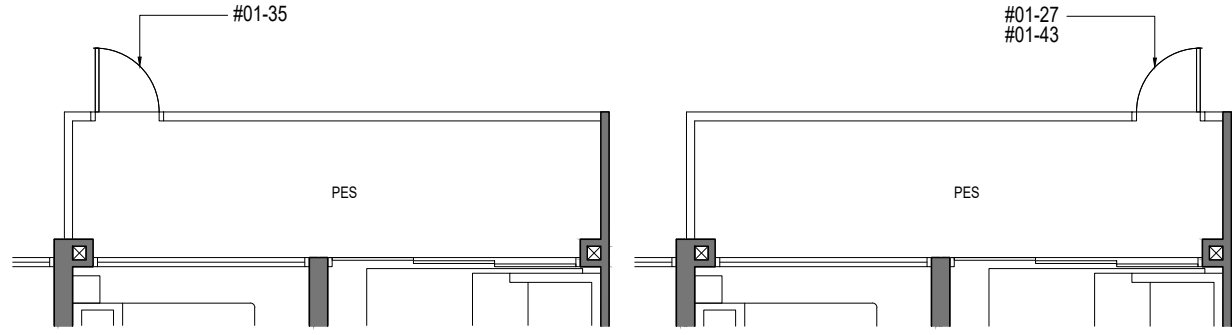
UNIT

#01-35

TOWER 64

UNIT

#01-43



APPLICABLE TO TYPE D2-G

TYPE D2

114 sq m/ 1227 sq ft

INCLUSIVE OF 9 SQM BALCONY

TOWER 60

UNIT

#02-27 TO #08-27

#10-27 TO #16-27

TOWER 62

UNIT

#02-35 TO #08-35

#10-35 TO #16-35

TOWER 64

UNIT

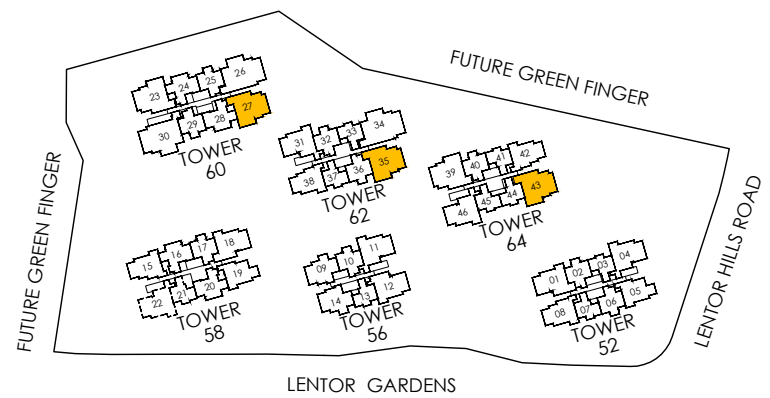
#02-43 TO #08-43

#10-43 TO #16-43



LEGEND (where applicable) :

- F - Fridge
- WD - Washer Dryer
- P - Pantry
- DB - Distribution Board
- O - Oven
- ST - Store
- GH - Gas Hab



All plans are subjected to amendments as may be approved by the relevant authorities. Floor areas are approximate measurements and are subjected to final survey.
BP Approval No. A1709-00005-2023-BP01 dated 31/01/2024

5 - BEDROOM

TYPE E1-G

138 sq m/ 1485 sq ft

INCLUSIVE OF 11 SQM PES

TOWER 60

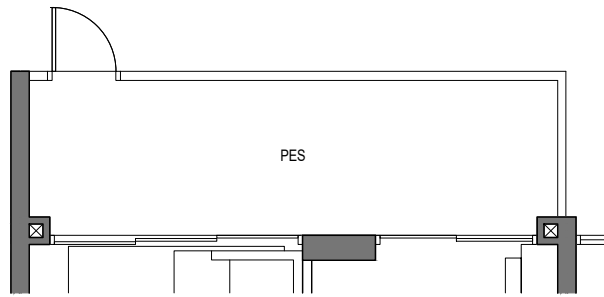
UNIT

#01-26

TOWER 62

UNIT

#01-34



APPLICABLE TO TYPE E1-G

TYPE E1

138 sq m/ 1485 sq ft

INCLUSIVE OF 11 SQM BALCONY

TOWER 60

UNIT

#02-26 TO #08-26

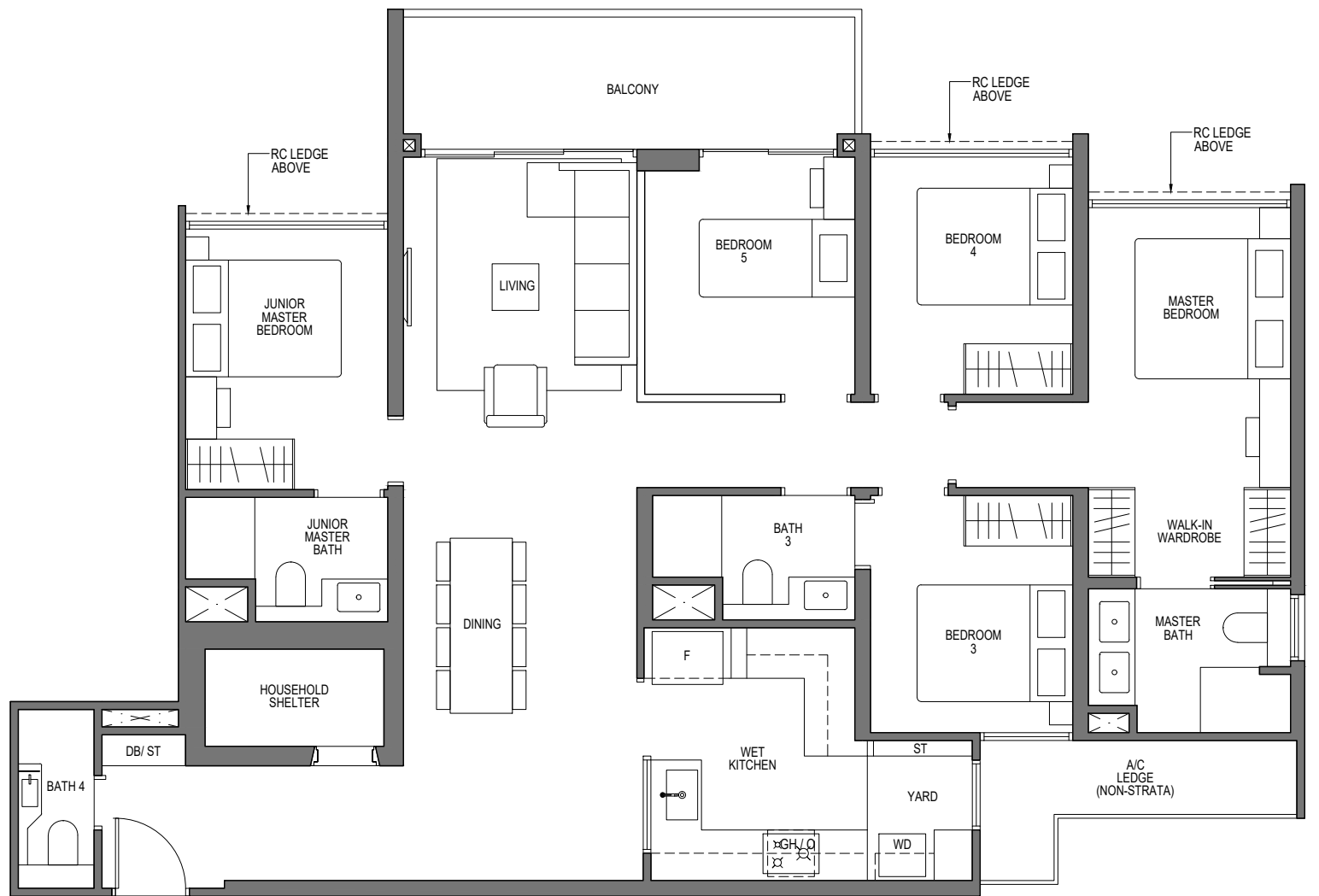
#10-26 TO #16-26

TOWER 62

UNIT

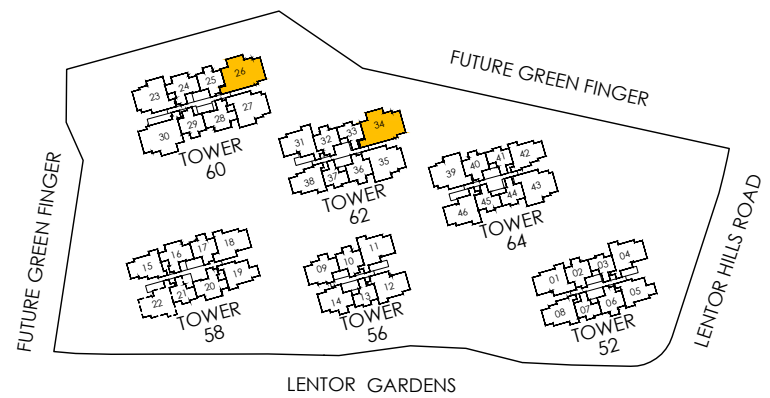
#02-34 TO #08-34

#10-34 TO #16-34



LEGEND (where applicable) :

- F - Fridge
- P - Pantry
- O - Oven
- GH - Gas Hob
- WD - Washer Dryer
- DB - Distribution Board
- ST - Store



All plans are subjected to amendments as may be approved by the relevant authorities. Floor areas are approximate measurements and are subjected to final survey.
BP Approval No. A1709-00005-2023-BP01 dated 31/01/2024

5 - BEDROOM

TYPE E2-G

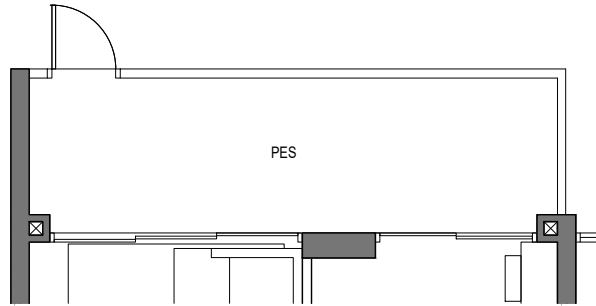
140 sq m/ 1507 sq ft

INCLUSIVE OF 11 SQM PES

TOWER 60

UNIT

#01-30



APPLICABLE TO TYPE E2-G

TYPE E2

140 sq m/ 1507 sq ft

INCLUSIVE OF 11 SQM BALCONY

TOWER 60

UNIT

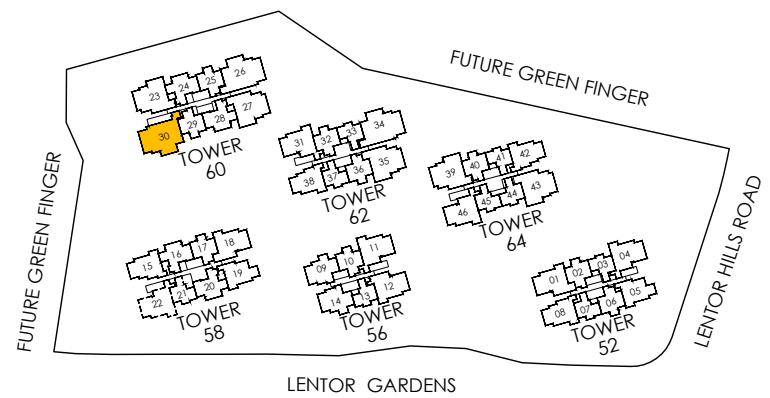
#02-30 TO #08-30

#10-30 TO #16-30



LEGEND (where applicable) :

- F - Fridge
- P - Pantry
- O - Oven
- GH - Gas Hob
- WD - Washer Dryer
- DB - Distribution Board
- ST - Store



All plans are subjected to amendments as may be approved by the relevant authorities. Floor areas are approximate measurements and are subjected to final survey.
BP Approval No. A1709-00005-2023-BP01 dated 31/01/2024